

Preemie Double 4-Patch Quilt

This kit contains all the fabric needed to make the quilt specified on the enclosed pattern. The fabrics included have already been pre-washed and are ready for you to begin sewing with.

NOTE: If you are using this pattern to make a quilt from your own fabrics, use only 100% cotton fabric in infant themed colors and prints for the pieced center block and borders. Use only 100% cotton flannel in a coordinating color for the backing fabric. All flannel fabric must be pre washed first in unscented laundry soap before cutting. Do Not use any liquid fabric softeners or dryer sheets. No batting is used in the quilt.

Pieced Center:

Fabric A - one 3 1/2" X 15" strip

Fabric B - one 3 1/2" X 15" strip

Fabric C - two 6 1/2" squares

Border:

Fabric D - two 3 1/2" X 13 1/2" strips and two 3 1/2" X 19" strips

Backing:

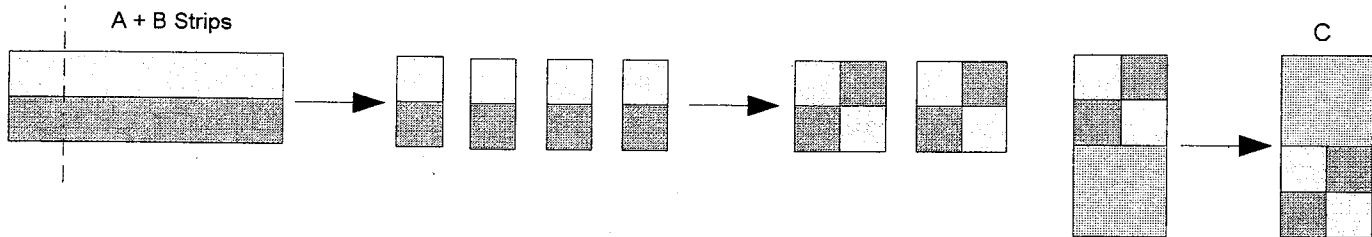
Fabric E - cotton flannel, 18 1/2" X 18 1/2" (Tip: 1-1/8 yard, 40-44" wide = 4 backs)

Construction:

Using a 1/4" inch seam throughout construction, sew fabric strips A and B together along the long edge.

Press seam to darker side. Cut four 3 1/2" wide sections as shown (will have approximately 1" excess).

Make two 4-patch units.



Sew a 4-patch unit to each 6 1/2" square (Fabric C). Join Row 1 and Row 2, reversing placement of the four patches. Press and trim the pieced center to 12 1/2" square. Sew a border strip to two opposite sides of the quilt. Press and trim borders even with the quilt. Add top and bottom border strips, press and trim to 18 1/2" square.

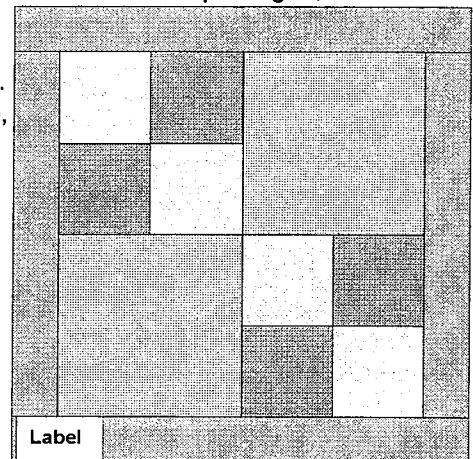
Attach label by machine sewing it to the front side (cotton fabric) in the bottom left corner. Aligning it 3/4" from the bottom and the left side of the edge of the fabric. Do This before adding backing fabric.

Both front and backing fabric should be 18 1/2" prior to combining (unfinished size). With right sides together, sew a 1/4" seam around the 4 sides, leaving an opening at least 4" long on one side about half way down in the middle of the seam, in order to turn and finish. After turning, press carefully so backing fabric is not visible around the edges. Close the opening by checking to see if both edges of the fabric where the opening is, is turned in 1/4" towards the inside, and sew a continuous seam 1/8" in from the edge, on all four sides of the quilt.

Now quilt in - the - ditch of the pieced center block to complete the quilt. Please wash and dry the completed quilt using unscented laundry soap, and do not use any liquid fabric softener or dryer sheets, before returning it. Thank you for helping to bring a smile to a child in need.

Please return completed quilts to:
Lincoln Quilts For Kids
2925 N. 42nd. St.
Lincoln, NE. 68504

Contact Ila with any questions at:
lincolnequiltsforkids@gmail.com



Preemie, One Patch Quilt

This kit contains all the fabric needed to make the quilt specified on the enclosed pattern. The fabrics included have already been pre-washed and are ready for you to begin sewing with.

NOTE: If you are using this pattern to make a quilt from your own fabrics, use only 100% cotton fabric in infant themed colors and prints for the center block and borders. Use only 100% cotton flannel in a coordinating color for the backing fabric. **All flannel fabric must be pre-washed first in unscented laundry soap before cutting. Do Not use any liquid fabric softeners or dryer sheets.** No batting is used in the quilt.

Center block:

Fabric A** - one 12 1/2" square of infant theme fabric

** Appropriate infant themed pillow panel may also be used.

Border:

Fabric B - two 3 1/2" wide strips by 13 1/2" long **and**
two 3 1/2" wide strips by 19" long

Backing:

Fabric C - cotton flannel, 18 1/2" X 18 1/2" (**Tip:** one and 1/8 yard, 40-44" wide = 4 backs)

Using a **1/4" seam** throughout construction, sew the 13 1/2" strips to opposite sides of the block. Press seams and trim borders even with the center block. Next, sew the 19" side borders to the top and bottom as shown. Press seams and trim to 18 1/2" square.

Attach label by machine sewing it to the front side (cotton fabric) in the bottom left corner. Aligning it 3/4" from the bottom and the left side of the edge of the fabric. Do This before adding backing fabric.

Both front and backing fabric should be 18 1/2" prior to combining (unfinished size). With right sides together, sew a 1/4" seam around the 4 sides, leaving an opening at least 4" long on one side about half way down in the middle of the seam, in order to turn and finish. After turning, press carefully so backing fabric is not visible around the edges. Close the opening by checking to see if both edges of the fabric where the opening is, is turned in 1/4" towards the inside, and sew a continuous seam 1/8" in from the edge, on all four sides of the quilt.

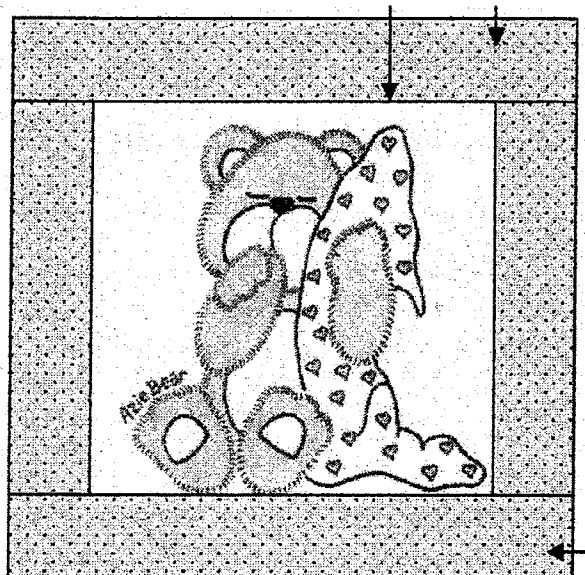
Quilt in the center block with your choice of quilting design.

Please wash and dry the completed quilt using unscented laundry soap, and do not use any liquid fabric softener or dryer sheets, before returning it.

Thank you for helping to bring a smile to a child in need.

Please return completed quilts to:
Lincoln Quilts For Kids
2925 N. 42nd. St.
Lincoln, NE. 68504

Contact Ila with any questions at :
lincolnequiltsforkids@gmail.com



Premie 9 Patch Quilt

Lincoln Quilts For Kids

This kit contains all the fabric needed to make the quilt specified on the enclosed pattern. The fabrics included have already been pre-washed and are ready for you to begin sewing with.

NOTE: If you are using this pattern to make a quilt from your own fabrics, use only 100% cotton fabric in infant themed colors and prints for the pieced center block and borders. Use only 100% cotton flannel in a coordinating color for the backing fabric. **All flannel fabric must be pre washed first in unscented laundry soap before cutting. Do Not** use any liquid fabric softeners or dryer sheets. No batting is used in the quilt.

Pieced Center:

Fabric A - five 4 1/2" squares (100% cotton)

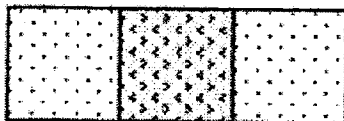
Fabric B - four 4 1/2" squares (100% cotton)



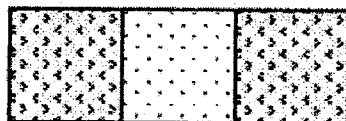
Border Fabric C - (any coordinating color), two 3 1/2" X 13 1/2" strips and two 3 1/2" X 19" strips (100% cotton)

Backing Fabric D - cotton flannel, 18 1/2" X 18 1/2" (Tip: 1-1/8 yard, 40-44" wide = 4 backs)

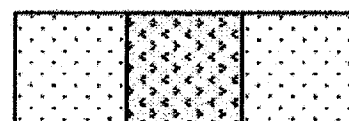
Using 1/4" seam throughout, sew the squares together into 3 rows of 3 squares each. Press seams.



First row



Second row



Third row

Next, sew the 3 rows together as shown, to form the 9-patch center. Press seams.

Sew the two 13 1/2" strips to opposite sides of the pieced center. Press seams. Trim even with the pieced center. Next, sew the two 19" strips to top and bottom, press seams. Trim to 18 1/2" square.

Attach label by machine sewing it to the front side (cotton fabric) in the bottom left corner. Aligning it 3/4" from the bottom and the left side of the edge of the fabric. Do This before adding backing fabric.

Both front and backing fabric should be 18 1/2" prior to combining (unfinished size). With right sides together, sew a 1/4" seam around the 4 sides, leaving an opening at least 4" long on one side about half way down in the middle of the seam, in order to turn and finish. After turning, press carefully so backing fabric is not visible around the edges. Close the opening by checking to see if both edges of the fabric where the opening is, is turned in 1/4" towards the inside, and sew a continuous seam 1/8" in from the edge, on all four sides of the quilt.

Now quilt in - the - ditch of the pieced center block and borders to complete the quilt.

Please wash and dry the completed quilt using unscented laundry soap, and do not use any liquid fabric softener or dryer sheets, before returning it. Thank you for helping to bring a smile to a child in need.

Please return completed quilts to:
Lincoln Quilts For Kids
2925 N. 42nd. St.
Lincoln, NE. 68504

Contact Ila with any questions at:
lincolnequiltsforkids@gmail.com

